

Balanced section through the Eastern Alps

Bernd Lammerer & Petra Veselá

Ludwig-Maximilians-University; Dpt. of Earth & Environmental Sciences, Luisenstr. 37,
D-80333 München (Germany) (Lammerer@iaag.geo.uni-muenchen.de).

The Eastern Alps differ with many respects from the Western and Central Alps. This includes the deep structures, which were thoroughly investigated during the TRANSALP project. Basing on geophysical and field data along the whole line a new cross section of the Eastern Alps will be presented, which accounts for balancing requests.

References:

Lammerer B., Gebrande H., Lüschen E. & Veselá P. (2008). A crustal-scale cross-section through the Tauern Window (eastern Alps) from geophysical and geological data. In: Siegesmund S., Fügenschuh, B. & Froitheim N. (eds) Tectonic Aspects of the Alpine-Dinaride-Carpathian System. Geological Society, London, Special Publications, 298, 219–229.

Lüschen, E., Lammerer, B., Gebrande, H., Millahn, K., Nicolich, R., TRANSALP Working Group. (2004). Orogenic structure of the Eastern Alps, Europe, from TRANSALP deep seismic reflection profiling. *Tectonophysics*, **388**, 85-102.

TRANSALP Working group. (2002): First deep seismic reflection images of the Eastern Alps reveal giant crustal wedges and transcrustal ramps. - *Geophysical Research Letters*, **29**, no.10, 4 pp., doi: 10.1029/2002GL014911.

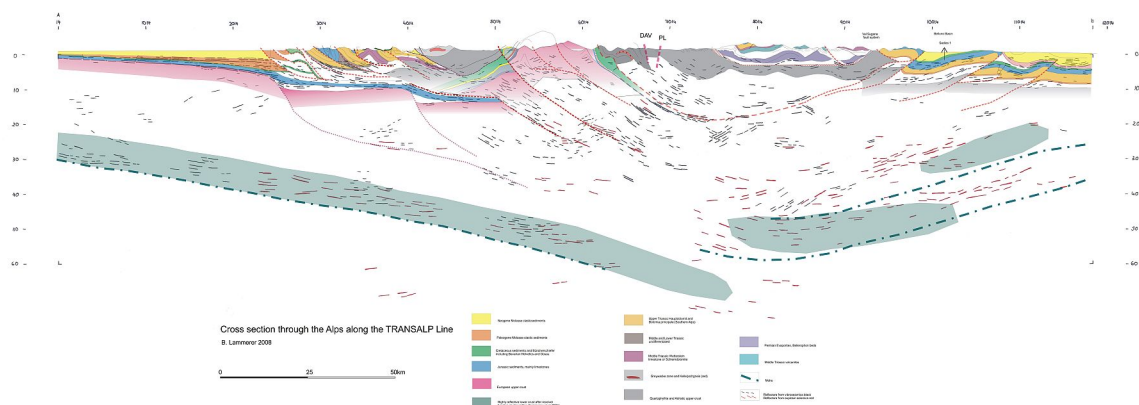


Fig. 1 Cross section through the Eastern Alps along the TRANSALP Line with line drawing of depth converted prominent reflectors. Shaded area at base: highly reflective lower crust